

# FireBird Frame Grabbers

Active Silicon designs and manufactures fast and reliable interface cards for CoaXPress and Camera Link



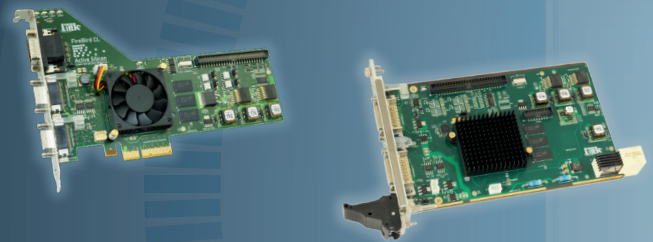
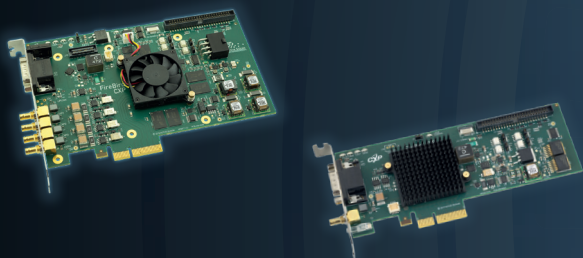
## FireBird Features

- High-speed acquisition in real time due to **ActiveDMA** technology
- No CPU overhead
- Fully **GenICam** compliant (GenTL Producer)
- Variety of form factors available
- Windows, Linux and QNX supported
- Comprehensive I/O



## Software Support

FireBird cards are supported by Active Silicon's software development kit, **ActiveSDK**. Camera and frame grabber control is delivered by our **ActiveCapture** front-end software.



## CoaXPress Frame Grabbers

- Quad, Dual and Single CXP boards available
- CXP-12 products (max 12.5 Gbps per connection)
- Support for CoaXPress v2.1
- Long cable support
- PoCXP (Power over CoaXPress)

## Camera Link Frame Grabbers

- Base, Medium, Full and 80-bit configuration
- Support for Camera Link v2.1
- PoCL (Power over Camera Link)
- Full GenICam support for CLProtocol and GenCP cameras
- Embedded formats available e.g. cPCI Serial

[www.activesilicon.com](http://www.activesilicon.com)

Providing advanced imaging products, embedded systems and solutions

HEADQUARTERS  
Tel: +44 (0)1753 650600  
[info@activesilicon.com](mailto:info@activesilicon.com)

NORTH AMERICA  
Tel: +1-410-696-7642  
[info@activesilicon.com](mailto:info@activesilicon.com)



<b>CXP</b>	CoaXPress	Connections	Maximum Rate per Connection	Simultaneous Cameras	PCI Express Bus	Format
<b>4xCXP12-3PE8</b>	v2.1 CXP-12	4	12.5 Gbps	1, 2 or 4 cameras	Gen3 x8	Full height PC
<b>4xCXP12-3PE4</b>	v2.1 CXP-12	4	12.5 Gbps	CXP-12: 1 or 2 CXP-6: 1, 2 or 4	Gen3 x4	Full height PC
<b>2xCXP12-3PE4L</b>	v2.1 CXP-12	2	12.5 Gbps	1 or 2 cameras	Gen3 x4	Full height or low profile PC
<b>1xCXP12-3PE4L</b>	v2.1 CXP-12	1	12.5 Gbps	1 camera	Gen3 x4	Full height or low profile PC
<b>1xCXP6-2PE4L</b>	v1.1.1 CXP-6	1	6.25 Gbps	1 camera	Gen2 x4	Full height or low profile PC

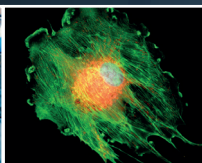
<b>CAMERA Link</b>	Camera Link	Maximum Camera Clock	PoCL	Simultaneous Cameras	PCI Express Bus	Format
<b>1xCLD-2PE4</b>	v2.1	85MHz	Supported	2 cameras (Base), 1 camera (Medium, Full, 80-bit)	Gen2 x4	Full height PC
<b>1xCLD-2PE4L</b>	v2.1	85MHz	Supported		Gen2 x4	Full height or low profile PC
<b>1xCLD-2PE4 cPCI Serial</b>	v2.1	85MHz	Supported		Gen2 x4	3U cPCI Serial



Medical Devices



Machine Vision



Life Science



Surveillance



Inspection



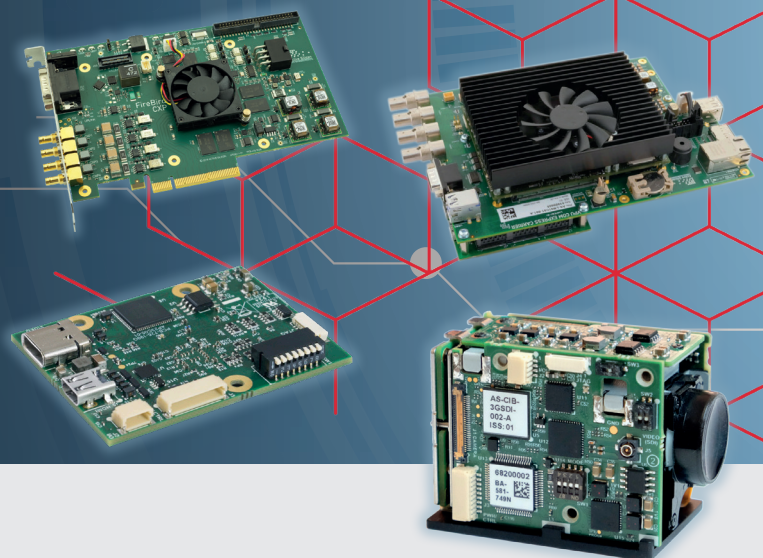
Automation



Transport

Active Silicon, founded in 1988, designs, manufactures and supplies advanced imaging products, embedded systems and custom solutions for a wide spectrum of applications.

- Frame Grabbers
- Embedded Systems
- Cameras
- Camera Interface & Processor Boards



**Active Silicon**  
COMPUTER IMAGING PRODUCTS  
A SOLID STATE PLC GROUP COMPANY

[www.activesilicon.com](http://www.activesilicon.com)

#### HEADQUARTERS

ACTIVE SILICON LTD  
PINWOOD MEWS  
BOND CLOSE  
IVER SLO 0NA, UK

Tel: +44 (0)1753 650600  
[info@activesilicon.com](mailto:info@activesilicon.com)

#### NORTH AMERICA

ACTIVE SILICON INC.  
479 JUMPERS HOLE ROAD, SUITE 301  
SEVERNA PARK  
MD 21146, USA

Tel: +1-410-696-7642  
[info@activesilicon.com](mailto:info@activesilicon.com)

FOLLOW US ON:

